



### Product Description

#### Specifications:

- Optical sensor for fine tuning of Solar Tracker for concentrator applications
- Precision better than 0.1°



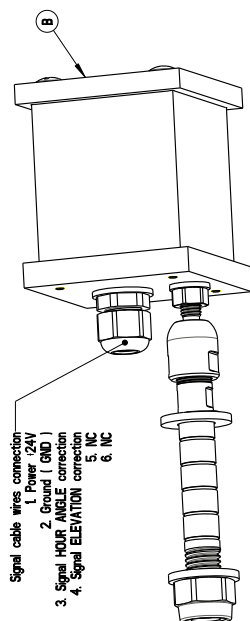
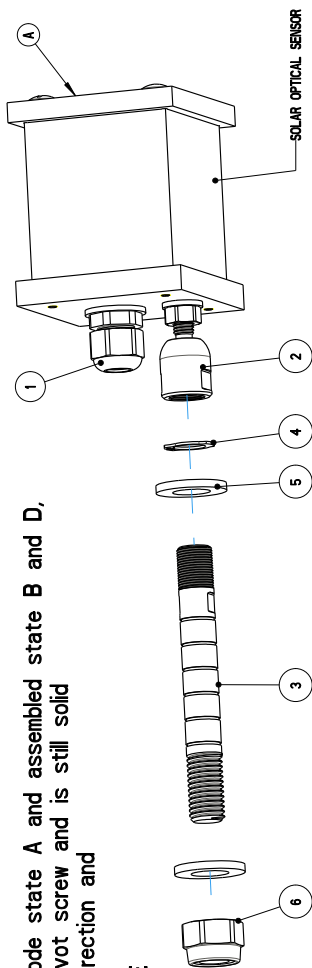
Made in Europe

## INSTRUCTIONS FOR INSTALATION

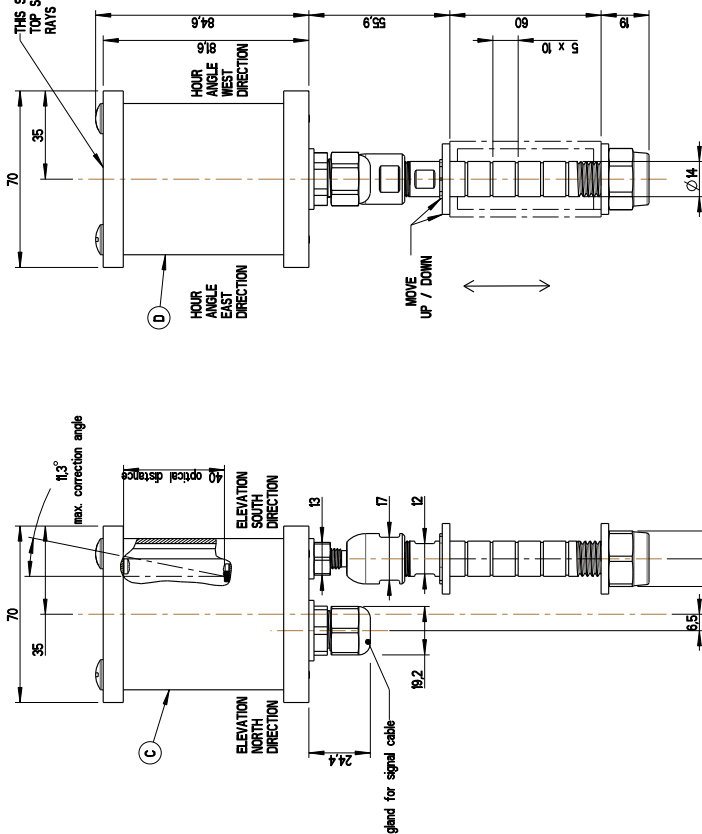
Follow the steps and assemble and set as is written below:

1. Assemble the sensor throw the hole dia 14 mm on construction as is shown in explode state A and assembled state B and D, and do not tight much the nut with pivot angle 2, so you can turn around pivot screw and is still solid
2. Align sensor to the panels or to construction so that is parallel with hour angle direction and
3. Align top surface normal to solar panels top surface as is shown in view D and E
4. Connect the cable into a junction box in distribution panel where is written HOUR angle input and ELEVATION angle input.
5. Do not forget to connect the power as well +24VDC and - GND

Connect the USB port, run Helios analytics and set the parameters for solar optical sensor. The values for optical sensor are published in Helios analytics user manual.



THIS SURFACE NEED TO BE PARALLEL WITH TOP SURFACE OF SOLAR PANELS SO THAT SUN RAYS FALL NORMAL TO THIS SURFACE



| Code | Description  |
|------|--|
| 6    | 1 DIN920M4 Nut self-lock M4 DIN922 Fe/Zn 12um        |
| 5    | 2 DIN254M4 Washer DIN254 M4                          |
| 4    | 1 DIN478D4 Retaining ring DIN478 dia. 12             |
| 3    | 1 38306397399 Friction screw M4 for SOS0C1           |
| 2    | 1 38306397399 Bearing nut with pivot angle by SOS0C1 |
| 1    | 1 38306398046 Gland P6-9 set w opposite nut          |

| Part No.  | Part Name   | Material     | Size      | ISO 2768 M      | ISO 2768 H       | ISO 2768 N           | ISO 2768 P    |
|-----------|---|--------------|-----------|-----------------|------------------|----------------------|---------------|
| 0089      | Assembly of alumina box, glass and electronic board | Alumina      | g44x40x70 | M17             |                  |                      | P97           |
| Position: | Quantity:   | Material:    | Size:     | Open roughness: | Open tolerances: | Treatment & Remarks: | Price & Date: |
| Bolka B   | 393306390089  | Bolka B      | SOS0C1    | 0.089-A         | 0.500            | 593.335.0            |               |
| Drawn by: | Checked by:   | Approved by: | Code +2:  | No. of drawing: | Scale:           | Mass:                |               |
|           |   |              |           |                 |                  |                      |               |

Description: Solar optical sensor SOS0C1 w precision 0.1°